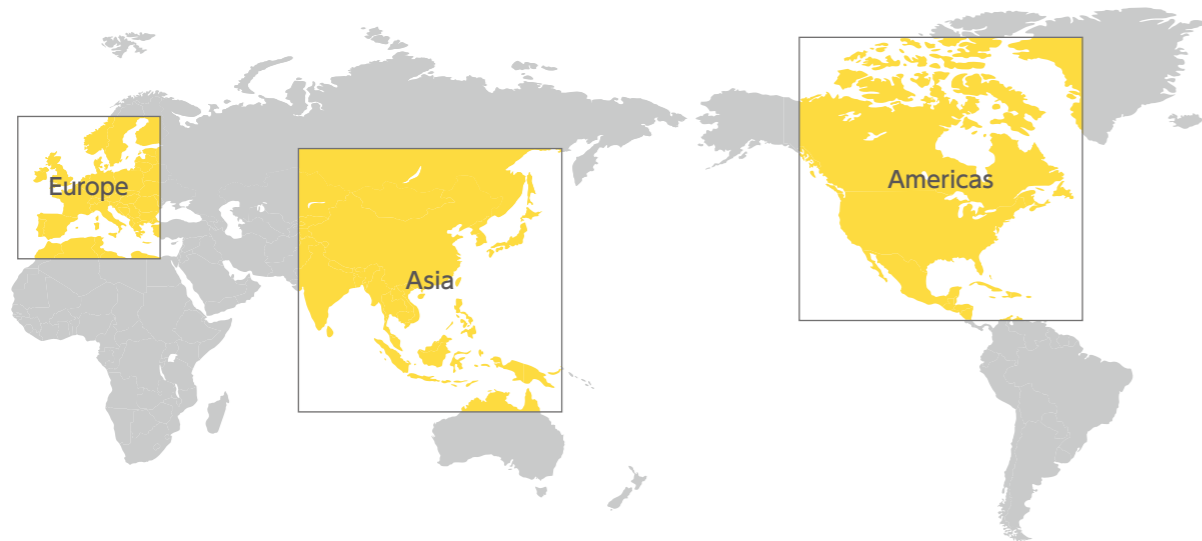


Global Network As of March 31, 2021

26 overseas subsidiaries **25** countries and regions of operation
(including representative offices and branch offices)



Countries and regions with local subsidiaries
 Countries and regions with representative offices and branch offices

Corporate Data / Stock Information

As of March 31, 2021

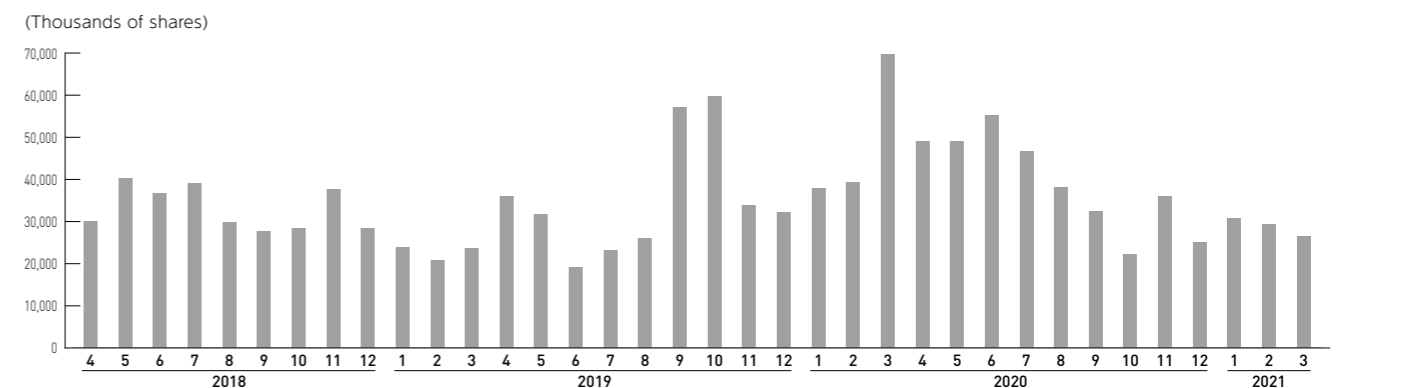
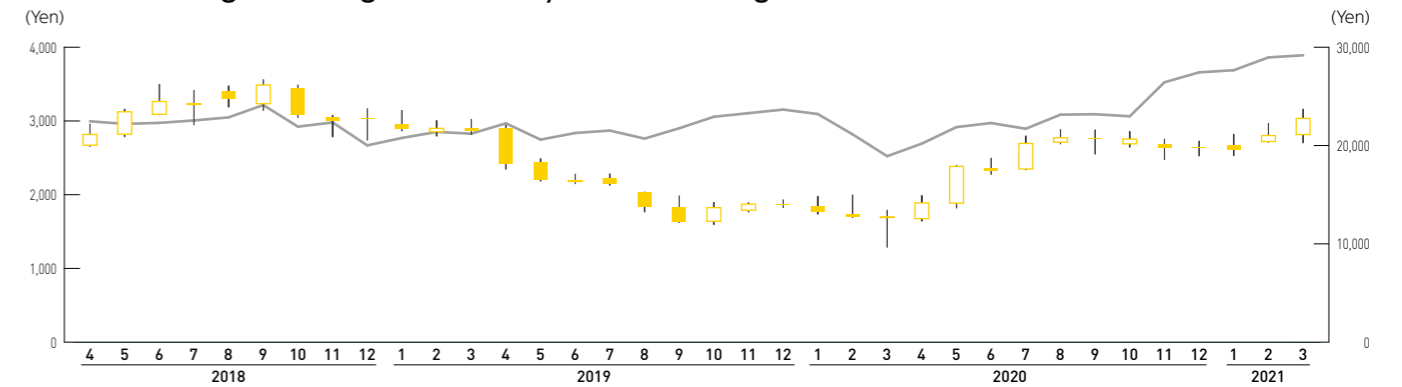
- ▶ **Company Name**
Yamato Holdings Co., Ltd.
- ▶ **Head Office**
16-10, Ginza 2-chome, Chuo-ku, Tokyo
104-8125 Japan
Telephone: 81-3-3541-4141
- ▶ **Established**
November 29, 1919
- ▶ **Registered**
April 9, 1929
- ▶ **Paid-in Capital**
127,234,791,077 yen
- ▶ **Website**
<https://www.yamato-hd.co.jp/english/>

- ▶ **Fiscal Year**
From April 1 to March 31
- ▶ **Common Stock**
Authorized: 1,787,541,000 shares
Issued: 388,575,592 shares
- ▶ **Stock Exchange Listing**
Tokyo Stock Exchange
- ▶ **Transfer Agent and Registrar**
Mizuho Trust & Banking Co., Ltd.
- ▶ **General Meeting of Shareholders**
Held in June
- ▶ **Auditor**
Deloitte Touche Tohmatsu LLC
- ▶ **Principal Shareholders**



	Percentage of total shares outstanding (excluding treasury shares)
The Master Trust Bank of Japan, Ltd. (Trust Account)	12.51%
Yamato Employees' Shareholding Association	6.40%
Custody Bank of Japan, Ltd. (Trust Account)	5.90%
Meiji Yasuda Life Insurance Company	3.99%
Nippon Life Insurance Company	3.98%
Mizuho Bank, Ltd.	2.76%
Yamato Trading-Partner Shareholding Association	2.26%
TOYOTA MOTOR CORPORATION	1.55%
Sompo Japan Insurance Inc.	1.38%
Aioi Nissay Dowa Insurance Co., Ltd	1.29%
Total	42.02%

Stock Price Range / Trading Volume (Tokyo Stock Exchange)



Stock price range (left scale)
 Nikkei stock average (right scale)
 Trading volume (left scale)